

Fat Tuesday Rag

Svend Asmussen

Lively

1

Violin

Bb Clarinet

Piano

Guitar

Bass

F C A7 D+ G+

F C A7 D+ G+

5

A pizz.

C C C

C C C

10

arco

D7 G7 C F F#° C Am

D7 G7 C F F#° C Am

15

B7 Em G° A° B° C D7 G7

B7 Em G° A° B° C D7 G7

20

C F C Bb7 A7 D7 G7 C7

C F C Bb7 A7 D7 G7 C7

25 **B**

F C7 F C7 A7

F C7 F C7 A7

30

Dm G7 C7 F C7

Dm G7 C7 F C7

35

F C7 B° B° F D° C7

F C7 B° B° F D° C7

40 C

F E7 Am F7 E7 Am E7

F E7 Am F7 E7 Am E7

8^{va}

45

Am Em B7 Em E7 Am

Am Em B7 Em E7 Am

8^{va}

50

F7 E7 A7 Bb Eb

8va F7 E7 A7 Bb Eb

55 1. 2. D pizz.

E E7 Am E7 Am G7 C D7

E E7 Am E7 Am G7 C D7

60

arco

G7 C F F#° C Am B7

G7 C F F#° C Am B7

65

Em G° A° B° C D7 G7 C

Em G° A° B° C D7 G7 C

70

E

F F^o C B^b7 A7 D7 G7 C D7 G

75

G^o Am E+ Am7 D Am A^o

G^o Am E+ Am7 D Am A^o

80

G B \flat D7 G F \sharp m7 B7 C

G B \flat D7 G F \sharp m7 B7 C

85

Am D7 D7 C \sharp °/D E° F \sharp 7 G

Am D7 D7 C \sharp °/D E° F \sharp 7 G

90 **F**

pizz. arco

G G#° Am E+ Am7 D Am F#m7 B7

G G#° Am E+ Am7 D Am F#m7 B7

96

Em G7 C G

Em G7 C G

101

Musical notation for measures 101-104, first system. The system consists of a single treble clef staff. Measure 101 starts with a quarter rest followed by a quarter note G4, an eighth note A4, and a quarter note B4. Measure 102 begins with a half note G4, followed by quarter notes A4 and B4. Measure 103 features a half note G4, a quarter note A4, and a quarter note B4. Measure 104 contains a half note G4, a quarter note A4, and a quarter note B4.

A7 D7 G G+7

Musical notation for measures 101-104, second system. The system consists of two staves: a treble clef staff and a bass clef staff. The treble staff contains chords and melodic lines corresponding to the first system. The bass staff provides a rhythmic accompaniment with eighth and quarter notes. Chord labels A7, D7, G, and G+7 are placed above the treble staff.

A7 D7 G G+7

Musical notation for measures 101-104, third system. The system consists of two staves: a treble clef staff and a bass clef staff. The treble staff contains chords and melodic lines. The bass staff provides a rhythmic accompaniment. Chord labels A7, D7, G, and G+7 are placed above the treble staff.

106 **G** **H** pizz.

Musical notation for measures 106-109, first system. The system consists of a single treble clef staff. Measure 106 starts with a quarter note G4, followed by eighth notes A4 and B4. Measure 107 continues with eighth notes C5, B4, A4, and G4. Measure 108 features eighth notes F4, E4, D4, and C4. Measure 109 contains eighth notes B3, A3, G3, and F3. A box labeled 'G' is above measure 106, and a box labeled 'H' is above measure 109. The word 'pizz.' is written above measure 109.

C C C C

Musical notation for measures 106-109, second system. The system consists of two staves: a treble clef staff and a bass clef staff. The treble staff contains chords and melodic lines. The bass staff provides a rhythmic accompaniment with quarter notes. Chord labels C are placed above the treble staff.

C C C C

Musical notation for measures 106-109, third system. The system consists of two staves: a treble clef staff and a bass clef staff. The treble staff contains chords and melodic lines. The bass staff provides a rhythmic accompaniment with quarter notes. Chord labels C are placed above the treble staff.

111

arco

D7 G7 C F F#° C Am

D7 G7 C F F#° C Am

116

B7 Em G° A° B° C D7 G7

B7 Em G° A° B° C D7 G7

121

Musical notation for measures 121-124, first system. The treble clef staff contains a melodic line with eighth and quarter notes, including a triplet in measure 122. The bass clef staff contains a bass line with quarter and eighth notes.

C F F#° C Bb7 A7 D7 G7

Musical notation for measures 121-124, second system. The treble clef staff contains a melodic line with eighth and quarter notes. The bass clef staff contains a bass line with quarter and eighth notes. Chord symbols are placed above the treble staff.

C F F#° C Bb7 A7 D7 G7

Musical notation for measures 121-124, third system. The treble clef staff contains a melodic line with eighth and quarter notes. The bass clef staff contains a bass line with quarter and eighth notes. Chord symbols are placed above the treble staff.

125 Freely

Musical notation for measures 125-128, first system. The treble clef staff contains a melodic line with eighth and quarter notes, including a triplet in measure 126. The bass clef staff contains a bass line with quarter and eighth notes. The word "Freely" is written above the treble staff.

D7 G7 D7 G7 C C7

Musical notation for measures 125-128, second system. The treble clef staff contains a melodic line with eighth and quarter notes. The bass clef staff contains a bass line with quarter and eighth notes. Chord symbols are placed above the treble staff.

D7 G7 D7 G7 C C7

Musical notation for measures 125-128, third system. The treble clef staff contains a melodic line with eighth and quarter notes, including a triplet in measure 126. The bass clef staff contains a bass line with quarter and eighth notes. Chord symbols are placed above the treble staff.

Violin

Fat Tuesday Rag

Svend Asmussen

Transcribed from the CD "Fiddling Around" (Svend Asmussen, Jacob Fischer, Jesper Lundgaard, Aage Tanggaard - 1994) by Arne Dich

The sources for this transcription is a guitar-part mostly showing the chords, and a full piano-part for a violin-piano arrangement - and of course the CD.

Lively

1

5

9 **A** pizz.

13 arco

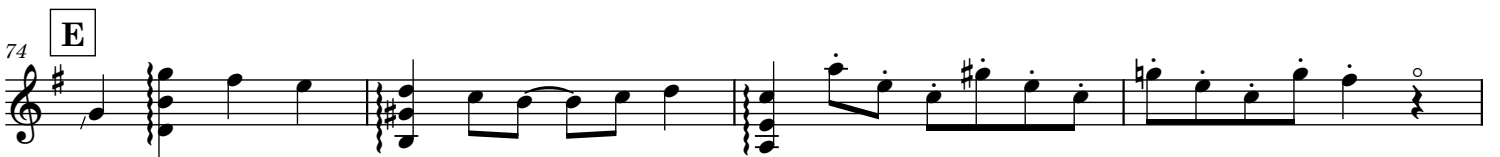
17

21

25 **B**

29

33



82

86

90 **F**

94 arco

98

102

106 **G** **H**

111 arco

116

120

124 **Freely**

Fat Tuesday Rag

Transcribed from the CD "Fiddling Around" (Svend Asmussen, Jacob Fischer, Jesper Lundgaard, Aage Tanggaard - 1994) by Arne Dich

The sources for this transcription is a guitar-part mostly showing the chords, and a full piano-part for a violin-piano arrangement - and of course the CD.

Lively

1

5

9

13

17

21

25

29

33

The diamond-notation gives freedom to play the most convenient guitar chords.

37 B^o B^o F D^o C7 F E7

C

41 Am F7 E7 Am E7

45 Am Em B7 Em E7

49 Am F7 E7 A7

53 Bb Eb E E7

D

58 C D7 G7 C

62 F F^o C Am B7 Em G^o A^o B^o

66 C D7 G7 C

70 F F^o C Bb7 A7 D7 G7 C D7

E

74 G G^o Am E+ Am7 D

78 Am A^o G Bb^o D7

82 G F#m7 B7 C Am D7

86 D7 C#°/D E° F#7 G

90 **F** G G#° Am E+ Am7 D

94 Am F#m7 B7 Em G7

98 C G

102 A7 D7 G G+7

106 **G** C C **H** C

111 D7 G7 C F F#°

115 C Am B7 Em G° A° B° C

119 D7 G7 C F F#° C Bb7 A7

124 D7 G7 D7 G7 D7 G7 C **Freely** C7

Bass

Fat Tuesday Rag

Transcribed from the CD "Fiddling Around" (Svend Asmussen, Jacob Fischer, Jesper Lundgaard, Aage Tanggaard - 1994) by Arne Dich

Svend Asmussen

The sources for this transcription is a guitar-part mostly showing the chords, and a full piano-part for a violin-piano arrangement - and of course the CD.

Lively

1 F C A7 D+ G+

5 C C

A

9 C D7 G7 C

13 F F#° C Am B7 Em G° A° B°

17 C D7 G7 C

21 F C Bb7 A7 D7 G7 C7

B

25 F C7 F C7

29 A7 Dm G7 C7

33 F C7 F C7

The image shows a bass line for the piece 'Fat Tuesday Rag'. It consists of ten staves of music in bass clef, 4/4 time. The first staff starts with a 'Lively' tempo marking and a key signature of one sharp (F#). Chords are indicated above the staff: F, C, A7, D+, and G+. The second staff has a measure rest at the beginning, then C, C, and three eighth notes with accents. The third staff is marked with a boxed 'A' and contains chords C, D7, G7, and C. The fourth staff has chords F, F#°, C, Am, B7, Em, G°, A°, and B°. The fifth staff has chords C, D7, G7, and C. The sixth staff has chords F, C, Bb7, A7, D7, G7, and C7. The seventh staff is marked with a boxed 'B' and contains chords F, C7, F, and C7. The eighth staff has chords A7, Dm, G7, and C7. The ninth staff has chords F, C7, F, and C7. The piece ends with a double bar line.

37 B° B° F D° C7 F E7

41 **C**
Am F7 E7 Am E7

45 Am Em B7 Em E7

49 Am F7 E7 A7

53 Bb Eb E E7 1. Am E7 2. Am G7

58 **D**
C D7 G7 C

62 F $F^{\#^{\circ}}$ C Am B7 Em G° A° B°

66 C D7 G7 C

70 F $F^{\#^{\circ}}$ C Bb7 A7 D7 G7 C D7

74 **E**
G $G^{\#^{\circ}}$ Am E+ Am7 D

78 Am $A^{\#^{\circ}}$ G Bb $^{\circ}$ D7

82 G F#m7 B7 C Am D7 >

86 D7 C#°/D E° F#7 G

90 **F** G G#° Am E+ Am7 D

94 Am F#m7 B7 Em G7

98 C G

102 A7 D7 G G+7

106 **G** C C

110 **H** C D7 G7 C

114 F F#° C Am B7 Em G° A° B°

118 C D7 G7 C F F#°

123 C Bb7 A7 D7 G7 D7 G7 D7 G7 C Freely C7